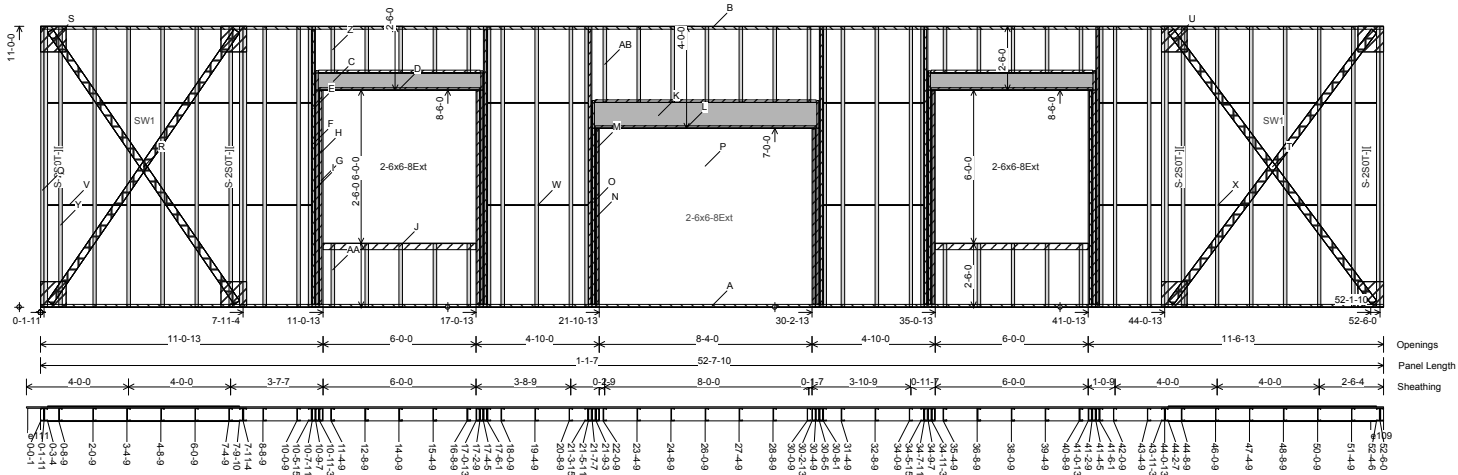


Length=52-7-10 Width=0-6-0 Stud Spacing=16 Studs=6" CSJ 16ga. 50ksi 6x1-5/8 1st Stud= 0-8-9 Lat. Bracing Hgt= 4-0-0 8-0-0
 TPIt pitch, xLen, spring= 0, 52-7-10 ,11-0-0
 BPIt pitch, xLen, spring= 0, 52-7-10 ,0 Bracing 0.0000BdFt
 Sheathing= 5/8" Densglass (4x8) L=0-6-10 R=0-0-0 T=0-0-0 B=0-0-8



Label	Member	Description	Qty/Length	LElev	RElev	LPlan	RPlan	Cutting List
A	Bot Plate	6" TSB 16ga. 50ksi	1/52-7-10					
B	Top Plate	6" TSB 16ga. 50ksi	1/52-7-10					
C	Header Stud	8" CSJ 12ga.-U 50ksi	4/6-6-12					
D	Header Trk	6" TSB 16ga. 50ksi	4/6-4-0					
E	King Stud	6" CSJ 16ga. 50ksi	12/10-11-12					
F	Track	6" TSB 16ga. 50ksi	6/10-9-0					
G	Jack Stud	6" CSJ 16ga. 50ksi	8/8-5-14					
H	Track	6" TSB 16ga. 50ksi	4/8-4-4					
I	Track	6" TSB 16ga. 50ksi	4/9-1-10					
J	Bot Sill Trk	6" TSE 12ga. 50ksi	2/6-0-0					
K	Header Stud	12" CSJ 12ga.-U 50ksi	3/8-10-12					
L	Header Trk	6" TSB 12ga. 50ksi	2/8-8-0					
M	Jack Stud	6" CSJ 16ga. 50ksi	4/6-11-14					

Landscape Elevation with Cutting**Job: BROCOV****Panel: e110**

Page 2

1/12/2009 08:24

Aegis Apogee - WallSolutions

Job#: 09-001

Loc: Can & US

N	Track	6" TSB 16ga. 50ksi	2/6-10-4
O	Track	6" TSB 16ga. 50ksi	2/7-11-11
P	Sheathing	5/8" Densglass (4x8)	19/8-0-0
Q	Critical Stud	6" CSJ 16ga. 50ksi	8/10-11-12
R	Shear Bracing	3"x16ga., 50ksi Flat Strap	4/12-11-1
S	Gusset Plate	12"x12"	8/1-0-0
T	Shear Bracing	3"x16ga., 50ksi Flat Strap	4/13-3-8
U	Gusset Plate	12"x12"	8/1-0-0
V	Lat Brace	1-1/2" CHN2 16ga. 33ksi	2/10-7-9
W	Lat Brace	1-1/2" CHN2 16ga. 33ksi	4/3-11-8
X	Lat Brace	1-1/2" CHN2 16ga. 33ksi	2/11-1-9
Y	Stud	6" CSJ 16ga. 50ksi	22/10-11-12
Z	Top Cripple	6" CSJ 16ga. 50ksi	10/1-9-10
AA	Bot Cripple	6" CSJ 16ga. 50ksi	10/2-5-12
AB	Top Cripple	6" CSJ 16ga. 50ksi	7/2-11-9