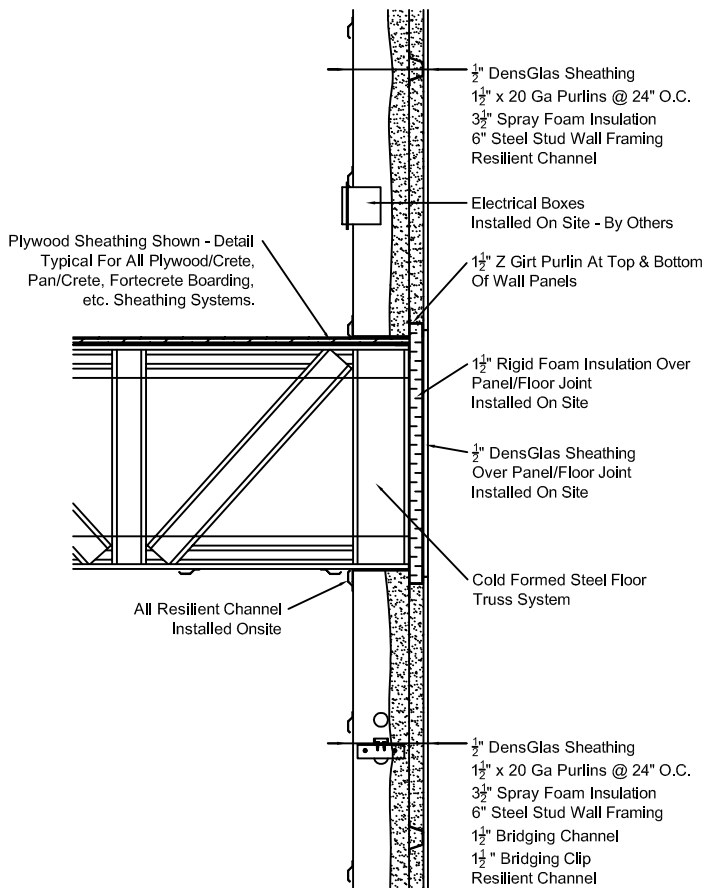
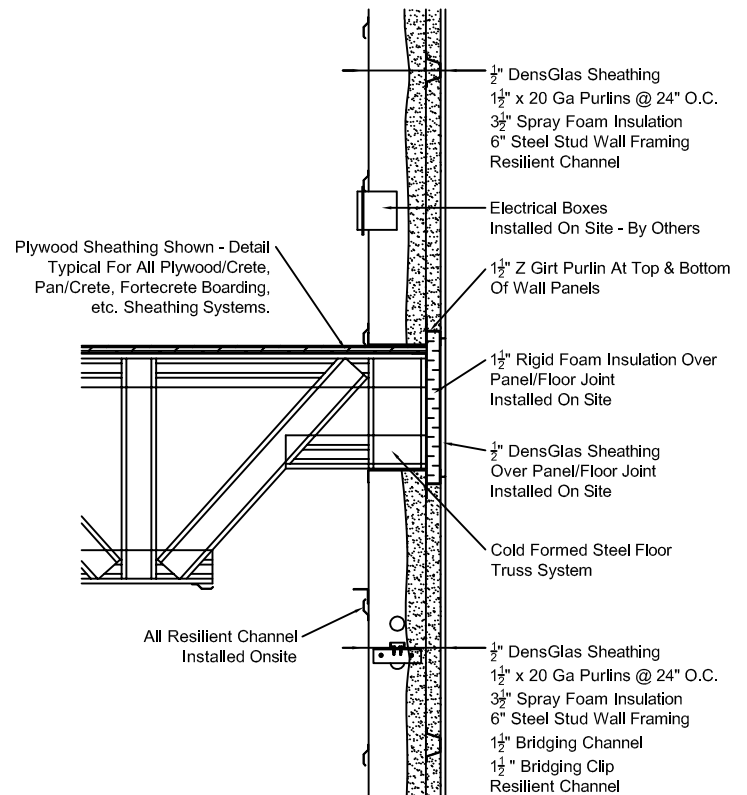


○ Prefabricated Wall Panel Assembly



○ Cold Formed Steel Truss Floor To Wall Detail Bottom Chord Bearing Detail



○ Cold Formed Steel Truss Floor To Wall Detail Top Chord Bearing Detail

Location:	Typical
Scale:	N/A
Date:	2008

Typical Wall And Floor Systems	
Design:	JWW
Drawn:	JV

4427 VanderWal Dr.
P.O. Box 878
Petrolia On, NON IRO
Toll Free: 1-877-251-6875
Fax: 519-882-4153
Email: info@trusses.ca

VanderWal
Commercial Group